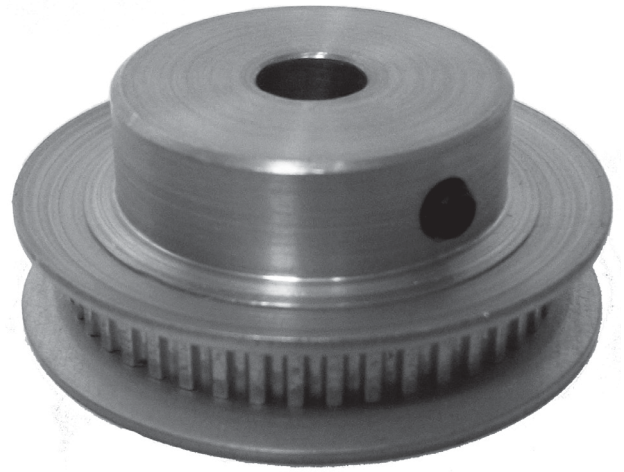


POWERHOUSE™ TIMING PULLEYS

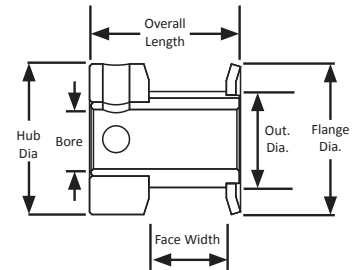
(For use with GT®2, GT®3, and FHT®-2 belts)

2 mm Pitch
For 3 mm Wide Belts
Hub and Flanges
Aluminum
Clear Anodized
Finished Bore

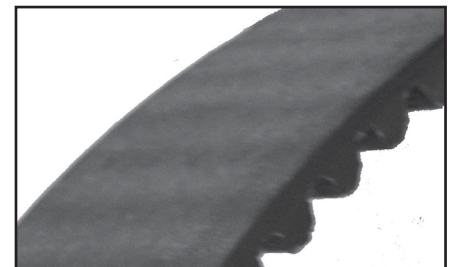
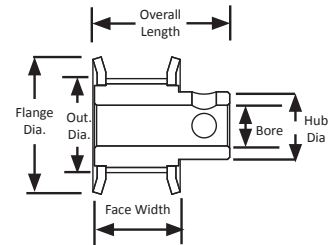


Part Number	No. of Teeth	Type	Pitch Dia. (in)	Out. Dia. (in)	Flange Dia. (in)	Bore (in)	Face Width (in)	Overall Length (in)	Hub Dia. (in)	Set Screw
12-2P03-6CA1	12	6C	0.301	0.281	0.480	0.125	0.204	0.438	0.480	1 x 4-40
13-2P03-6CA1	13	6C	0.326	0.306	0.505	0.125	0.204	0.438	0.505	1 x 4-40
14-2P03-6CA1	14	6C	0.351	0.331	0.530	0.125	0.204	0.438	0.530	1 x 4-40
15-2P03-6CA2	15	6C	0.376	0.356	0.555	0.188	0.204	0.438	0.555	1 x 6-40
16-2P03-6CA2	16	6C	0.401	0.381	0.580	0.188	0.204	0.438	0.580	1 x 6-40
17-2P03-6FA2	17	6F	0.426	0.406	0.635	0.188	0.260	0.484	0.312	2 x 4-40 @ 90°
17-2P03-6CA3	17	6C	0.426	0.406	0.635	0.250	0.204	0.438	0.635	2 x 6-40 @ 90°
18-2P03-6FA2	18	6F	0.451	0.431	0.635	0.188	0.260	0.484	0.312	2 x 4-40 @ 90°
18-2P03-6CA3	18	6C	0.451	0.431	0.635	0.250	0.204	0.438	0.635	2 x 6-40 @ 90°
19-2P03-6FA2	19	6F	0.476	0.456	0.635	0.188	0.260	0.484	0.338	2 x 4-40 @ 90°
19-2P03-6CA3	19	6C	0.476	0.456	0.635	0.250	0.204	0.438	0.635	2 x 6-40 @ 90°
20-2P03-6FA2	20	6F	0.501	0.481	0.685	0.188	0.260	0.484	0.364	2 x 4-40 @ 90°
20-2P03-6CA3	20	6C	0.501	0.481	0.685	0.250	0.204	0.438	0.685	2 x 6-40 @ 90°
21-2P03-6FA2	21	6F	0.526	0.506	0.710	0.188	0.260	0.484	0.390	2 x 4-40 @ 90°
21-2P03-6CA3	21	6C	0.526	0.506	0.710	0.250	0.204	0.438	0.710	2 x 6-40 @ 90°
22-2P03-6FA2	22	6F	0.551	0.531	0.740	0.188	0.260	0.484	0.390	2 x 4-40 @ 90°
22-2P03-6CA3	22	6C	0.551	0.531	0.740	0.250	0.204	0.438	0.740	2 x 6-40 @ 90°
24-2P03-6FA3	24	6F	0.602	0.582	0.790	0.250	0.260	0.516	0.442	2 x 6-40 @ 90°
25-2P03-6FA3	25	6F	0.627	0.607	0.815	0.250	0.260	0.516	0.468	2 x 6-40 @ 90°
26-2P03-6FA3	26	6F	0.652	0.632	0.840	0.250	0.260	0.516	0.490	2 x 6-40 @ 90°
28-2P03-6FA3	28	6F	0.702	0.682	0.895	0.250	0.260	0.516	0.494	2 x 6-40 @ 90°
30-2P03-6FA3	30	6F	0.752	0.732	0.945	0.250	0.260	0.516	0.546	2 x 8-32 @ 90°
32-2P03-6FA3	32	6F	0.802	0.782	1.000	0.250	0.260	0.516	0.598	2 x 8-32 @ 90°
36-2P03-6FA3	36	6F	0.902	0.882	1.105	0.250	0.260	0.516	0.676	2 x 8-32 @ 90°
40-2P03-6FA3	40	6F	1.003	0.983	1.210	0.250	0.275	0.531	0.754	2 x 8-32 @ 90°
42-2P03-6FA3	42	6F	1.053	1.033	1.260	0.250	0.275	0.531	0.806	2 x 8-32 @ 90°
44-2P03-6FA3	44	6F	1.103	1.083	1.315	0.250	0.275	0.531	0.858	2 x 8-32 @ 90°
45-2P03-6FA3	45	6F	1.128	1.108	1.340	0.250	0.275	0.531	0.900	2 x 8-32 @ 90°
48-2P03-6FA3	48	6F	1.203	1.183	1.420	0.250	0.275	0.531	0.936	2 x 8-32 @ 90°
50-2P03-6FA3	50	6F	1.253	1.233	1.470	0.250	0.275	0.531	0.936	2 x 8-32 @ 90°
56-2P03-6FA3	56	6F	1.404	1.384	1.575	0.250	0.275	0.531	1.030	2 x 8-32 @ 90°
60-2P03-6FA3	60	6F	1.504	1.484	1.730	0.250	0.275	0.531	1.222	2 x 8-32 @ 90°

TYPE 6C



TYPE 6F



For matching 2 mm POWERHOUSE™ pitch belts, see page 282.